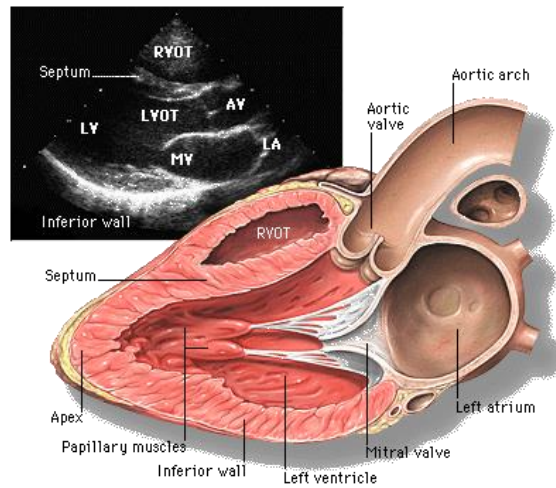
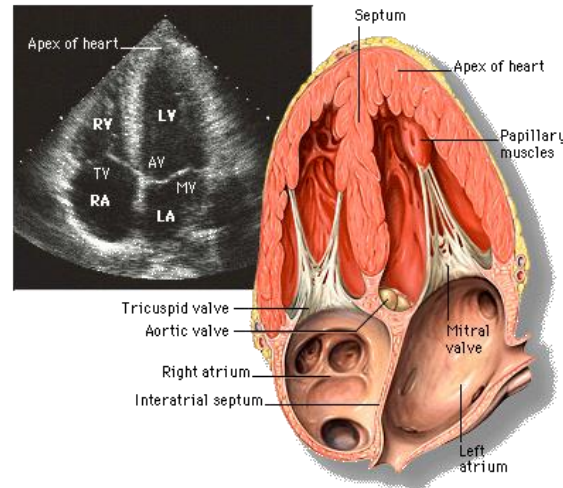


Parasternal long axis



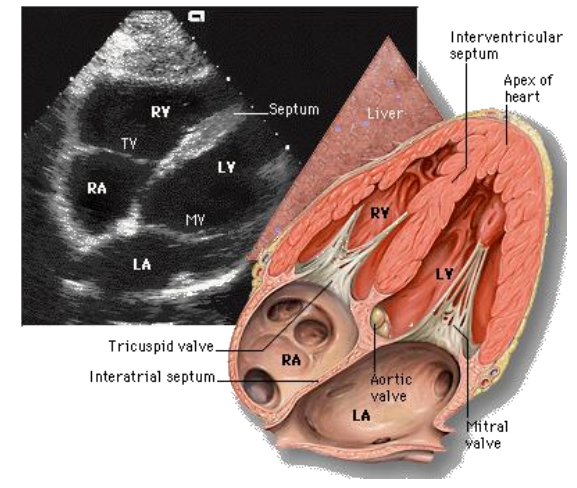
Transducer position: left 2nd-4th ICS
Marker dot towards: pt's right shoulder

Apical 4-chamber



Transducer position: apex of heart
Marker dot towards: pt's left shoulder

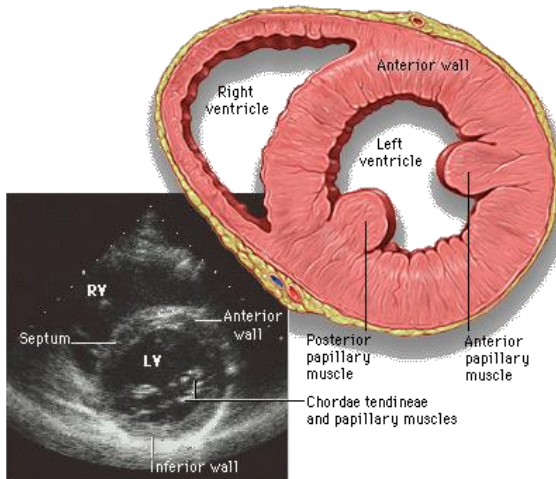
Subcostal/subxiphoid



Transducer position: subxiphoid
Marker dot towards: pt's left shoulder

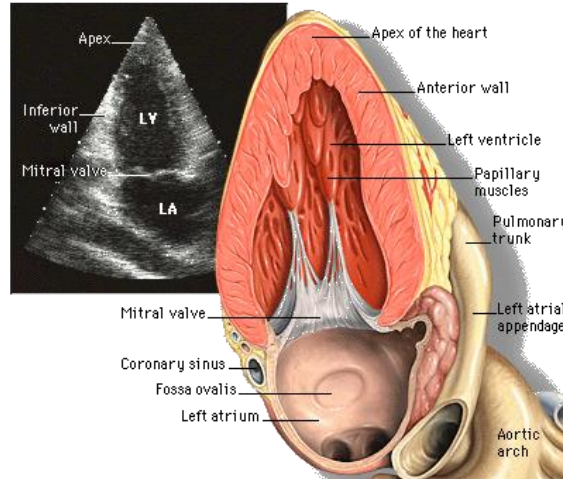
To get the IVC in view, rotate probe ~45 degrees counterclockwise and angle the tail of the probe medially.

Parasternal short axis



Transducer position: left 2nd-4th ICS
Marker dot towards: pt's left shoulder
The easiest way to get this view is to start with parasternal long axis and then rotate the probe 90 degrees clockwise

Apical 2-chamber



Transducer position: apex of heart
Marker dot towards: left side of pt's neck
The easiest way to get this view is to start with apical 4 chamber. Then rotate slowly counter clockwise (~45 degrees) until the right side of the heart disappears.

Sun-Jung Lim MD and Amy Morris, MD Univ. of Washington
ammo@uw.edu

Images used with permission from
www.yale.edu/imaging/echo_atlas/contents/index.htm